

**Title of Manuscript**  
**(The title should be brief and should indicate the subject studied and first letter of each main word capitalized)**

<sup>1</sup>First Author, <sup>2</sup>Second Author and <sup>1,2</sup>Third author  
<sup>1</sup>First affiliation, address, City and Postcode, Country  
<sup>2</sup>Second affiliation, address, City and Postcode, Country

---

**Abstract:** The abstract should not exceed 250 words, should be free of references, abbreviations and subheadings. It should consist on objective, methods, results, conclusion and relevance.

---

**Keywords:** Provide up to 5 keywords, separate by coma.

### INTRODUCTION

Establish the context of the work being reported. This is accomplished by discussing the relevant primary research literature (with citations) and summarizing the problem you are investigating.

State the purpose of the work in the form of the hypothesis, question, or problem you investigated; and, briefly explain your rationale and approach and, whenever possible, the possible outcomes your study can reveal.

Always insert tab in the beginning of second paragraph.

Citation in the text should use numbering instead of the first name of the author. For example, according to Desmet *et al.*, [1], bio-composite materials have gained attractiveness due to both economic and ecological concern in the last decades. This is due to the appearing of hydroxyl group due to the glycerol used in the experiment has three hydroxyl functional groups that are responsible for its solubility in water [2, 3].

### MATERIALS AND METHODS

This section is variously called Methods or Materials and Methods. It should give essential details, including experimental design, calculation and statistical analysis.

Subtopic for the main topic should be bold and after a single spacing from the text before. For example;

#### **Sample Preparation**

Start the next paragraph after single spacing. All the text formatting is the same

### RESULTS AND DISCUSSION

The results should illustrate and summarize findings of the research without discussion.

The discussion should scrutiny of the results rather than reiteration of the Results section.

Description or explanation of Figures and Tables should come first in text follows by the attach Figures and Tables. Numbering Figure and Tables should follow Figure 1, 2 or 3(a), (b) instead Figure 2.1, 2.2 etc. Figures and Tables should be written or state in one column only as example in the Figure 1 and Table 1.

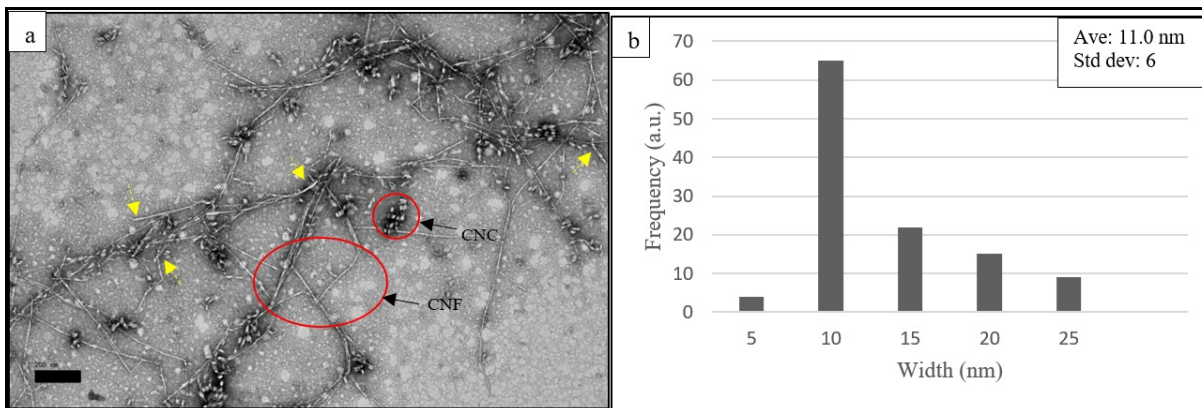


Figure 1: Caption should be center. If caption has 2 paragraphs should be aligned instead. No dot at the end of caption

Table 1: Caption should be center. If caption has 2 paragraphs should be aligned instead. No dot at the end of caption

Source of variance	Dependent variable	Sum of squares	Df	Mean square	F-ratio
Temperature	$\Delta L^*$	223.360	2	111.680	2.075 <sup>ns</sup>
	$\Delta C$	500.028	2	250.014	24.369**
	$\Delta E$	652.181	2	326.09	6.227**
	Extractives	80.263	2	40.123	5.140*
	Lignin	12.084	2	6.042	6.078*
	Holocellulose	227.234	2	113.617	43.868**
	Cellulose	62.488	2	31.244	56.397**
	Hemicellulose	53.921	2	26.961	32.138**
Duration	$\Delta L^*$	134.185	2	67.092	1.207 <sup>ns</sup>
	$\Delta C$	132.749	2	66.275	3.801*
	$\Delta E$	240.108	2	120.054	1.986 <sup>ns</sup>
	Extractives	34.343	2	17.172	1.580 <sup>ns</sup>
	Lignin	6.804	2	3.402	2.527 <sup>ns</sup>
	Holocellulose	23.254	2	11.627	0.718 <sup>ns</sup>
	Cellulose	5.748	2	2.874	0.663 <sup>ns</sup>
	Hemicellulose	5.881	2	2.941	0.728 <sup>ns</sup>

### CONCLUSION

Highlight the significant/unique findings of your study. Recommendation may also be included in this section.

### ACKNOWLEDGMENT

Acknowledge assistance, service or material provided and the funding resources of your study.

### REFERENCES

References should be cited in the text by number. Reference at the end of the paper should be listed numerically written according to APA format. Example of list of references as below:

- [1] Desmet, T., Berezina, N., and Martelli, S. 2014. Renewable Resources for Biorefineries (No. 27). Royal Society of Chemistry.
- [2] Abdel-Salam, S. I., Begawy, E. S., Metwally, M. S., Abdel-Hakim, A. A., and Elshafie, E. S. 2011. Effect of Mineral Fillers on Rice Straw Fiber/High Density Polyethylene Composites. Nature and Science, 9(912), 116–124.
- [3] La Mantia, F. P., Morreale, M., and Mohd Ishak, Z. A. 2005. Processing and Mechanical Properties of Organic Filler-Polypropylene Composites. Journal of Applied Polymer Science, 96(5), 1906–1913.

## **ADDITIONAL INFORMATION**

**The contents should be written in UK English.**

**Number of pages are limited up to 10 pages per manuscript.**

### **TABLES and FIGURES**

- Large and complex tables, figures and maps should be avoided in the main paper, but can be included in a data appendix for use by the reviewers.
- Notes under each table and figure should be used to explain and specify the source of all data shown.

#### **Tables Captions:**

Please note the following points:

- Provide self-explanatory caption of Table
- Put table No. In ascending order as well as in text
- Provide all tables in Tabulated format not in image.
- Tables should use horizontal lines only, with only blank space to separate columns

#### **Figure Captions:**

Please note the following points:

- Provide self-explanatory caption (s) of Figures
- Put Figure No. In ascending order as well as in text
- Provide good quality of Figures
- Figures insert within column have at most 3 inches width and without column have at most 5.5 inches width (Please modified figures of manuscript according to the format (all charts, graphs and diagrams in Black and Gray color with white background without graph lines))
- All Figures should have Font style: Time New Roman and Font Size: 10 with sharp writing
- Maps should be saved in a neutral data format such as JPEG, TIFF or EPS. Scanned figures (in JPEG and TIFF formats) should have a resolution of 300 dpi (halftone) or 600 to 1200 dpi (line drawings) in relation to the reproduction size.
- To insert images in *Word*, position the cursor at the insertion point and either use Insert | Picture | From File or copy the image to the Windows clipboard and then Edit | Paste Special | Picture (with “Float over text” unchecked).

#### **References formatting (APA Format):**

- A Book: Michael, B., S. Richard, J. Gelles and A. Levine, 1984. *Sociology: An Introduction*. 2nd Edn., Random House, New York.
- A Chapter in a Book: Leach, J., 1993. Impacts of the Zebra Mussel (*Dreissena polymorpha*) on Water Quality and Fish Spawning Reefs of Western Lake Erie. In: Nalepa, T. and D. Schloesser (Eds.), *Zebra Mussels: Biology, Impacts and Control*. Lewis Publishers, Ann Arbor, MI, pp: 381-397.
- AOAC., 1990. *Official Methods of Analysis*. 15th Edn., Association Official Analytical Chemists. Washington D.C., pp: 805-845.
- A Report: Makarewicz, J.C., T. Lewis and P. Bertram, 1995. Epilimnetic phytoplankton and zooplankton biomass and species composition in Lake Michigan, 1983-1992. U.S. EPA Great Lakes National Program, Chicago, IL. EPA 905-R-95-009.
- A Thesis: Strunk, J.L., 1991. The extraction of mercury from sediment and the geochemical partitioning of mercury in sediments from Lake Superior. M.S. Thesis, Michigan State Univ., East Lansing, MI.
- Conference/Proceedings: Muhammad, B.F. and R. Kwali, 2005. Prospects and constraints to small scale yoghurt production in Bauchi Metropolis. Proceeding of the 10th Annual Conference of the Animal Science Association of Nigeria. University of Ado-Ekiti, Sep. 12-15, pp: 234-236.
- Journal Articles: Ouyang, D., J. Bartholic and J. Selegean, 2005. Assessing sediment loading from agricultural croplands in the Great Lakes Basin. *J. Am. Sci.*, 1(2): 14-21.
- NRC., 1989. *Nutrient Requirements of Dairy Cattle*. 6th Rev. Edn. Natl. Acad. Press, Washington , D.C., pp: 90-110.